

JOURNEE PRESERVAGE/MALADIE D'ALZHEIMER

Mardi 18 octobre 2016

Augmenter l'espérance de vie, jusqu'où ?

Jean-Marie Robine

INSERM - EPHE - Paris Research University, France



AGING, NATURAL DEATH

Abstract The average length of life has risen to 73 years in this century, but the maximum has not increased. Therefore, survival curves assumed an ever more rectangular form. Eighty of the years of life lost to nontraumatic, premature death have been eliminated, and most premature deaths are now due to the chronic diseases of old age. Present data allow calculation of the ideal age life span, approximately 85 years. Chronic disease may presumably be postponed by changes in

THIS article discusses a set of predictions that contradict the conventional anticipation of an ever older, ever more feeble, and ever more dependent-to-care-for populace. These predictions suggest that the number of very old persons will not increase and the average period of diminished physical

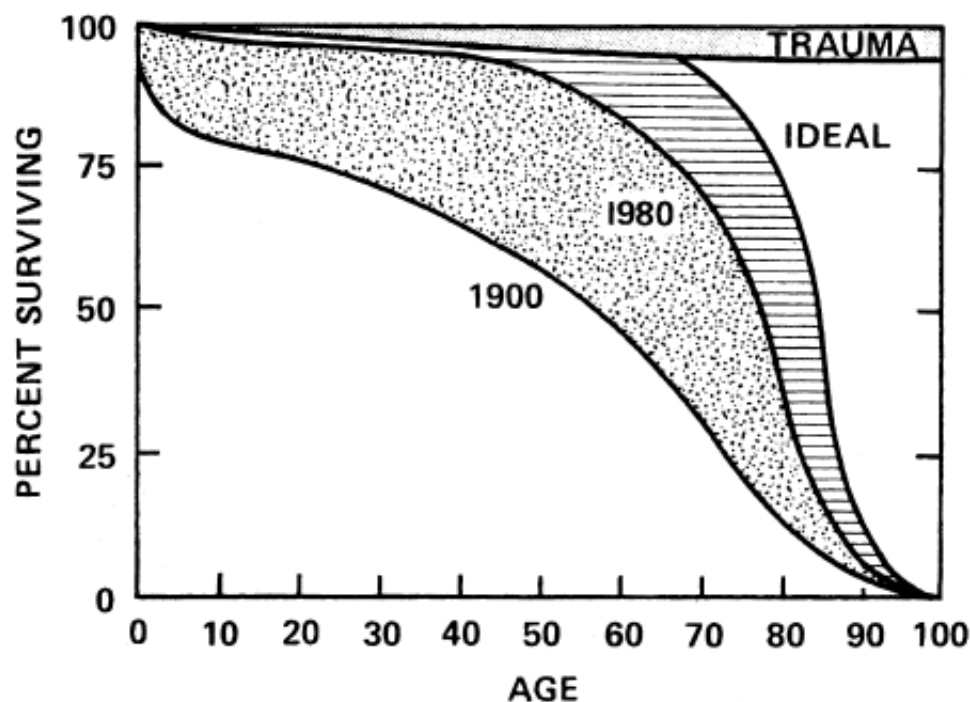


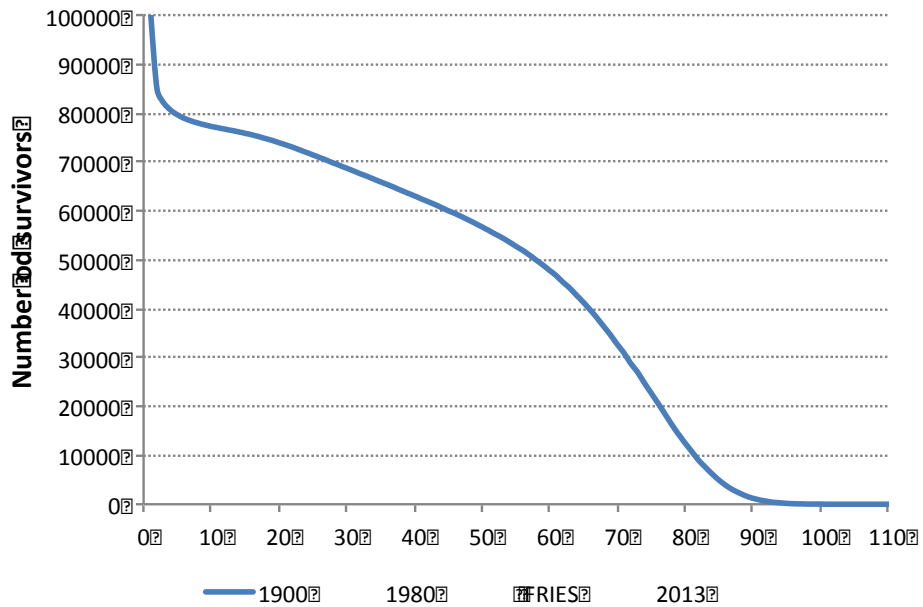
Figure 2. The Increasingly Rectangular Survival Curve. About 80 per cent (stippled area) of the difference between the 1900 curve and the ideal curve (stippled area plus hatched area) had been eliminated by 1980. Trauma is now the dominant cause of death in early life.

- Hayflick (1981) considers that if we are able to eliminate aging-related loss without changing the biological clock itself, *'the result would be a society whose members would live full, physically vigorous, youthful lives until death claimed them at the stroke of midnight on their one-hundredth birthday.'*

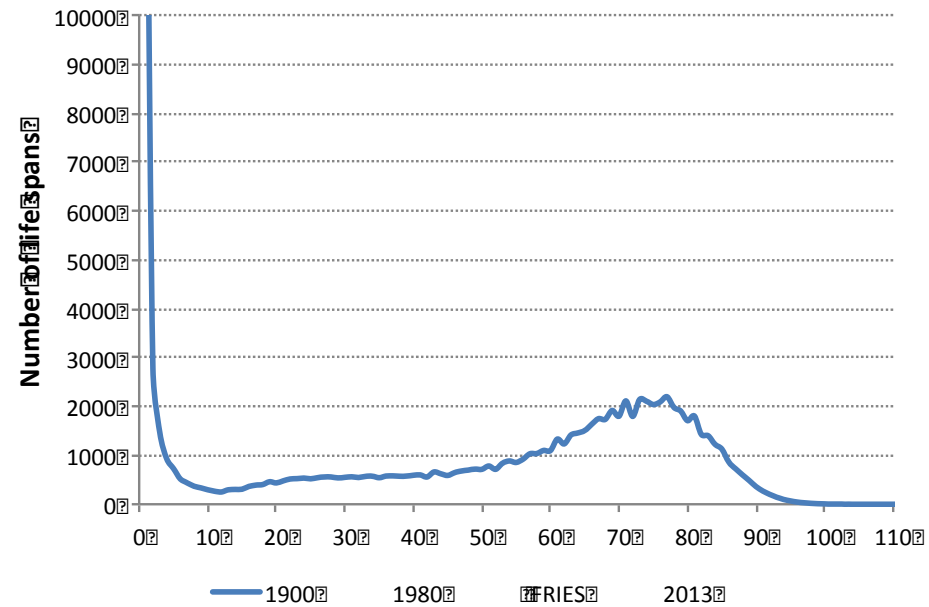
La révolution de la longévité des adultes

1900

Survival curve



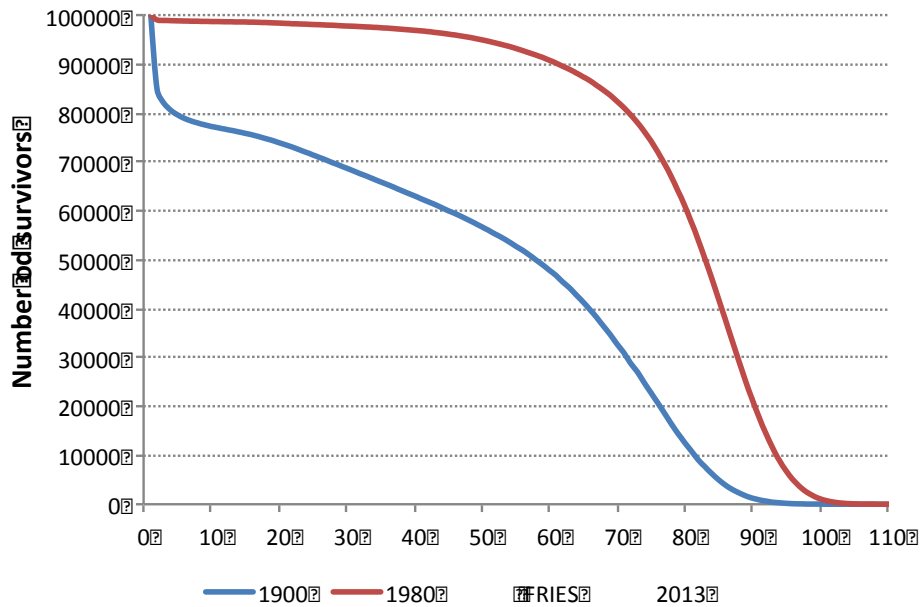
Individual lifespans



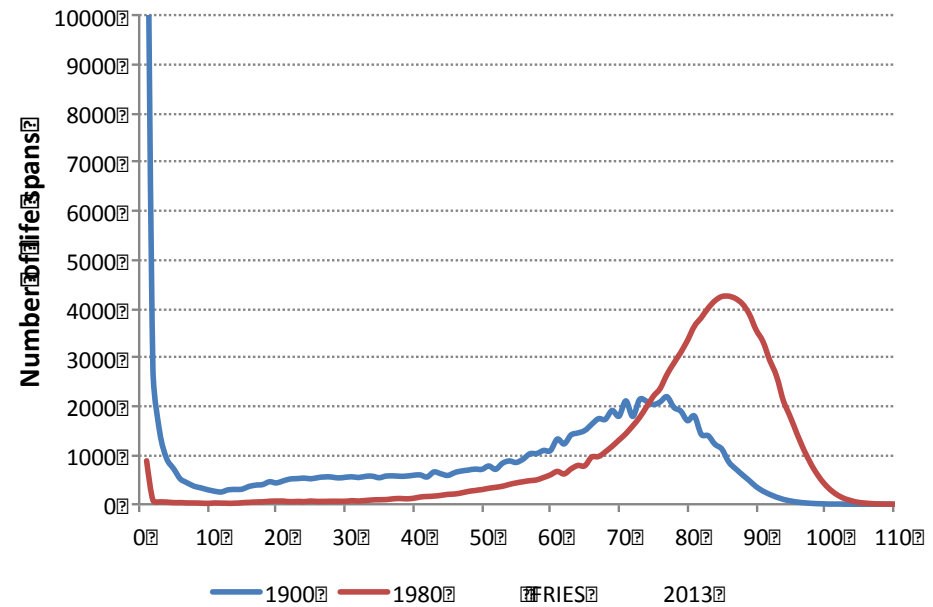
Femmes françaises

1900 - 1980

Survival curve



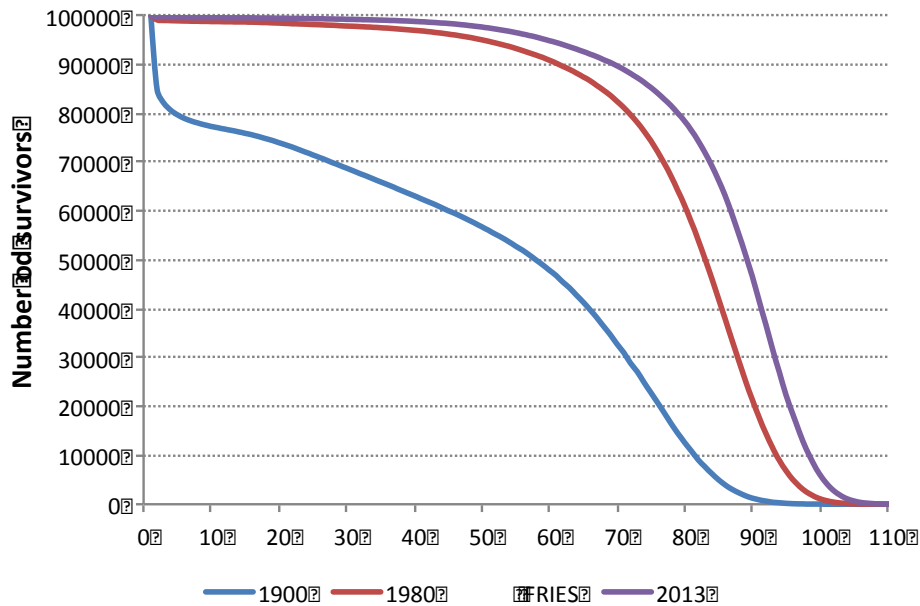
Individual lifespans



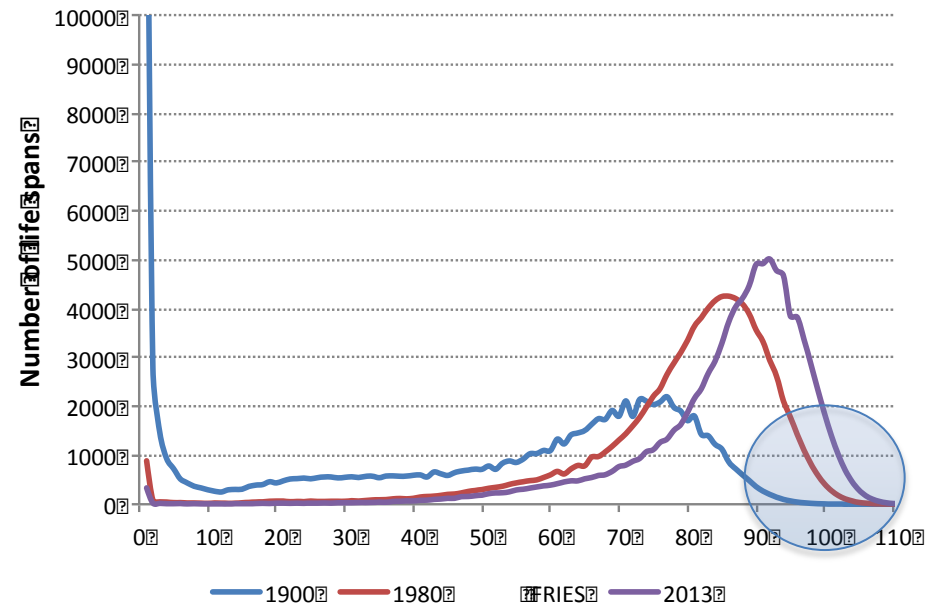
Femmes françaises

1900 - 1980 - 2013

Survival curve

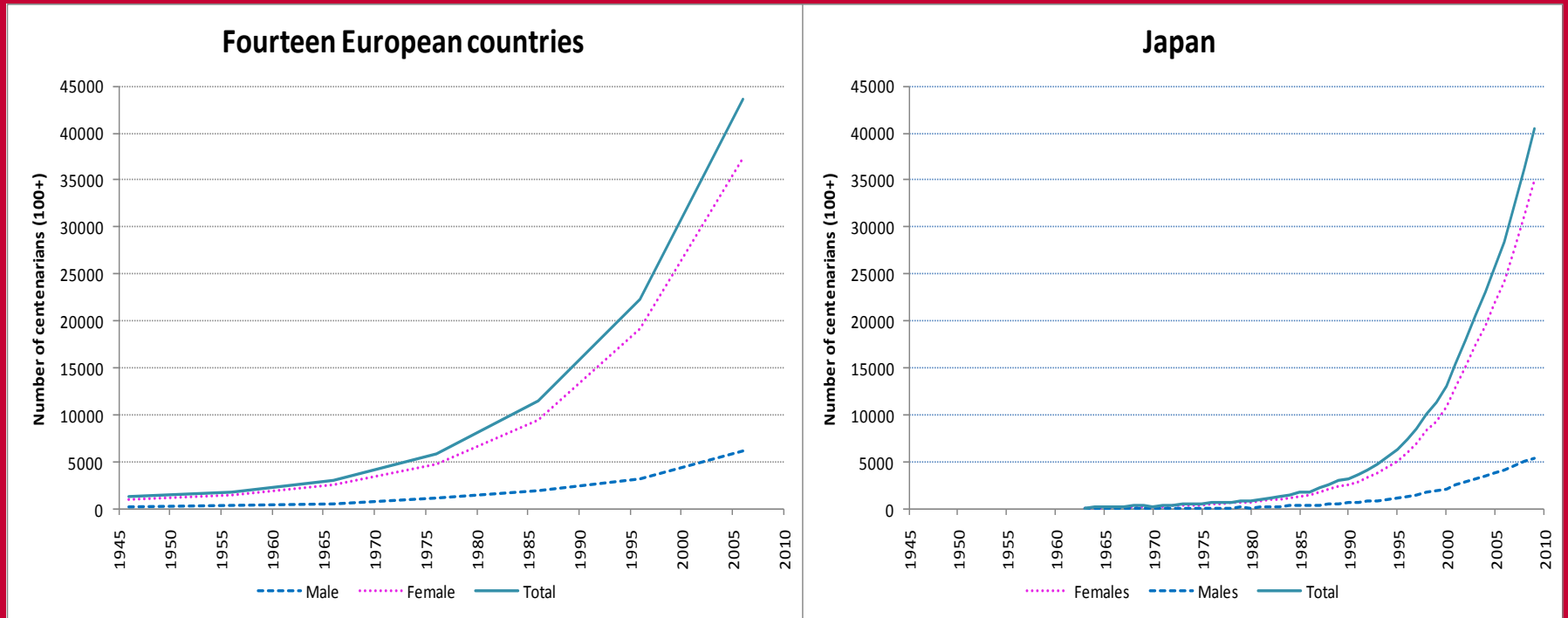


Individual lifespans



La révolution de la longévité des adultes

Nombre des centenaires: Europe vs. Japon



Europe vs. Japon

Number of Future Centenarians

December 2010

DWP Department for Work and Pensions

Table 2: Number of centenarians in the United Kingdom

Year	100+	110+
1980	2,300	-
1985	3,400	-
1990	4,400	-
1995	5,700	-
2000	6,800	-
2005	8,900	-
2010	11,800	-
2015	15,000	-
2020	21,900	-
2025	37,600	-
2030	58,800	100
2035	97,300	100
2040	148,900	400
2045	202,100	1,000
2050	276,600	2,100
2055	306,200	3,500
2060	378,200	5,600
2065	487,400	7,200
2070	563,500	10,700
2075	587,000	16,200
2080	626,900	21,000

Numbers rounded to nearest 100. Population estimates have been based on the 2009 census, and 2008-based population projections from 2010 onwards.

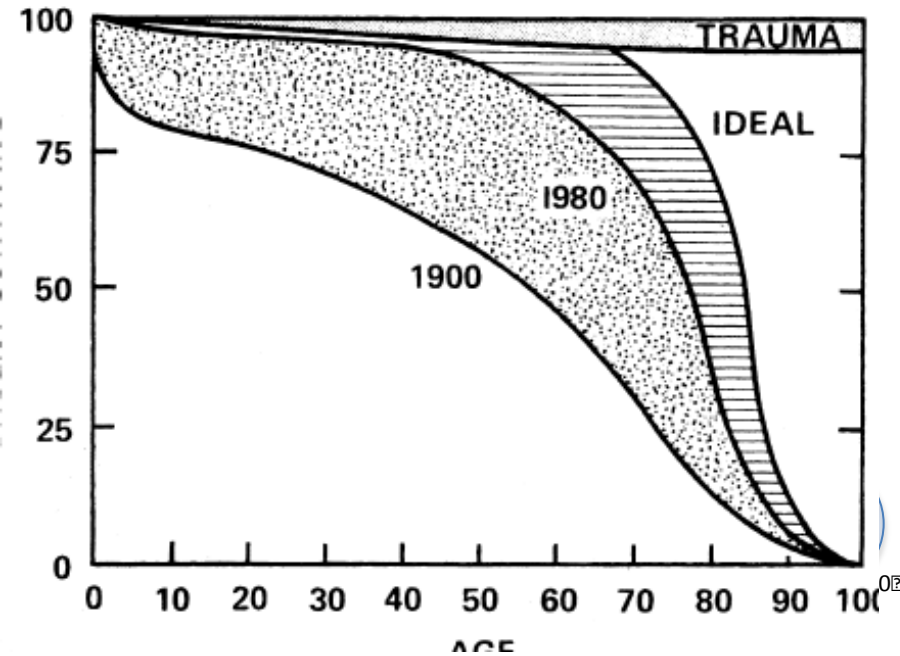
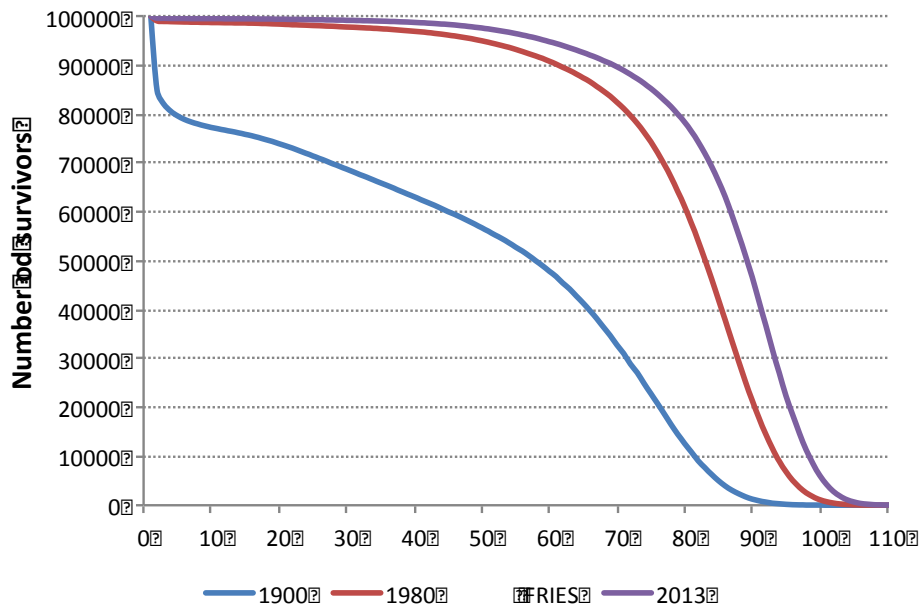
Source: Office for National Statistics, 2008-based Population Projections

Estimates of the very elderly:

www.statistics.gov.uk/statbase/Product.asp?vlnk=15003

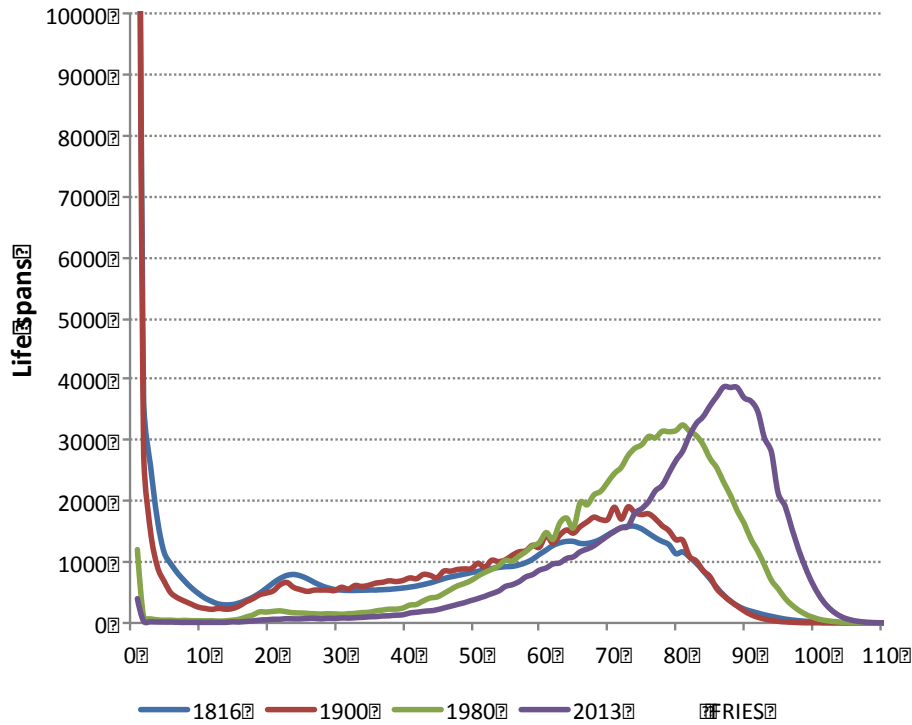
1900 - 1980 - 2013

Survival curve

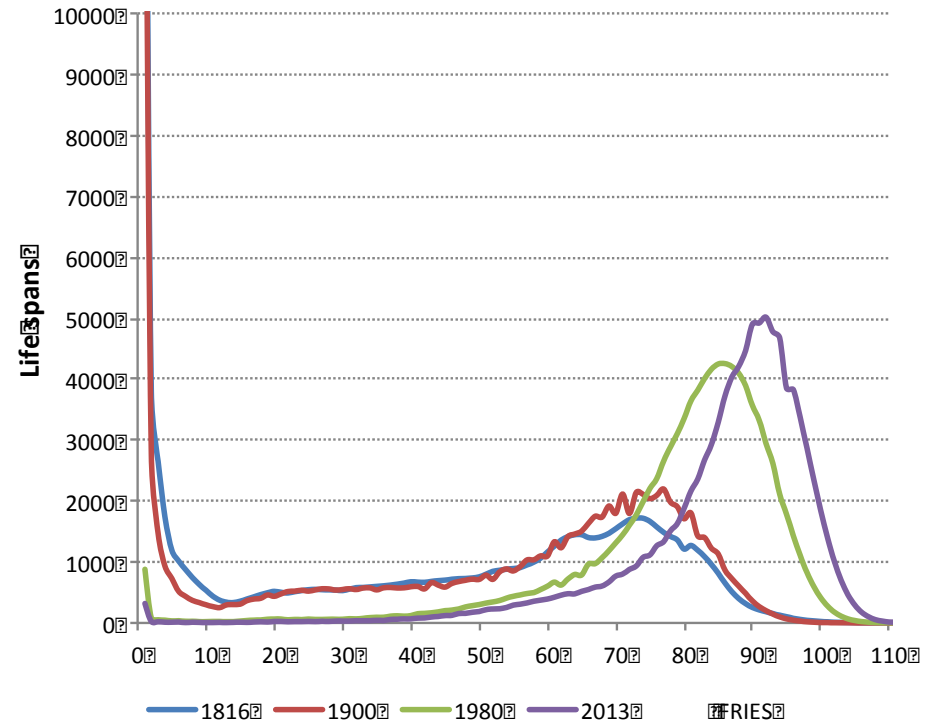


France, observations empiriques

Males

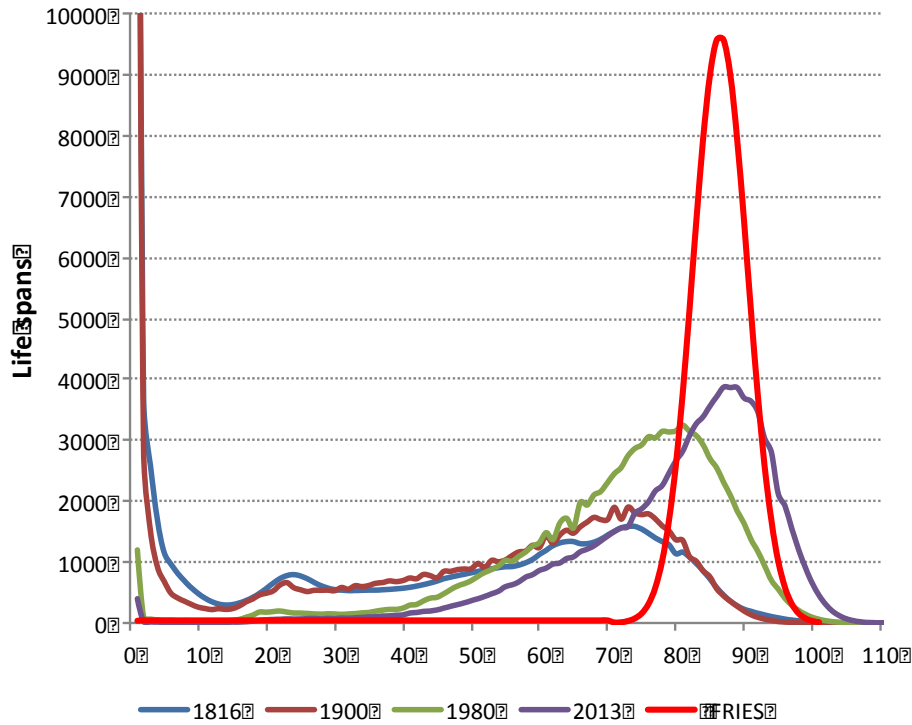


Females

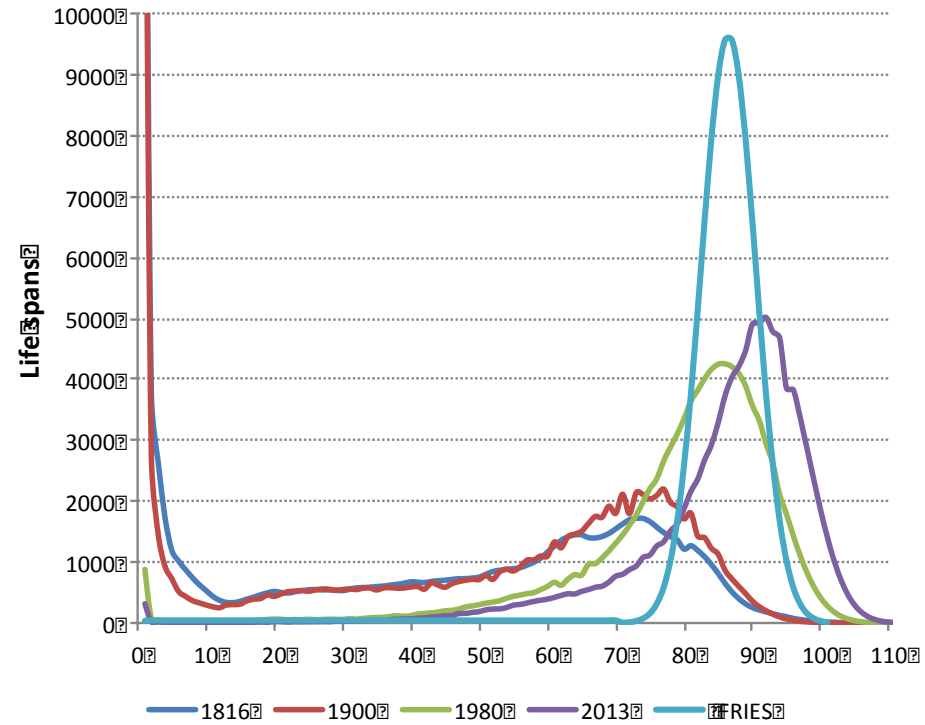


France, observations empiriques

Males

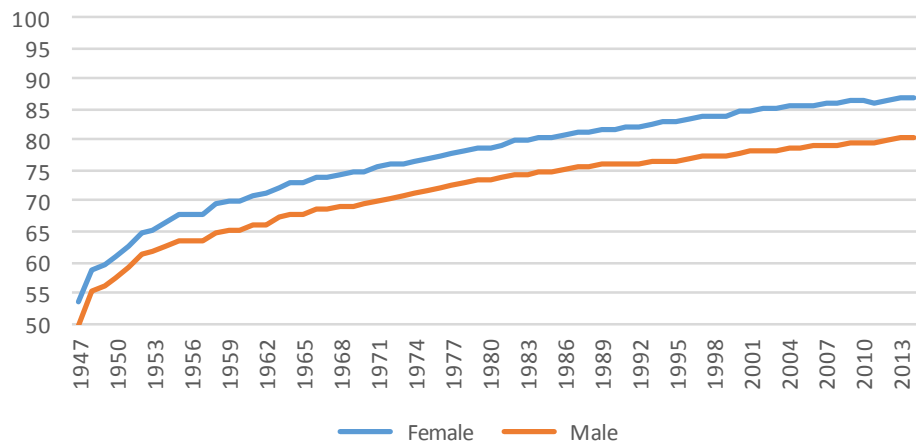


Females

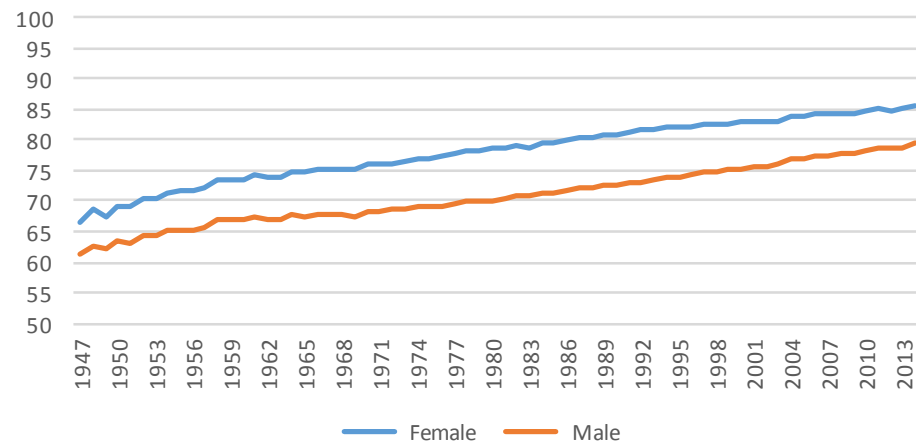


Augmenter l'espérance de vie, jusqu'où ?

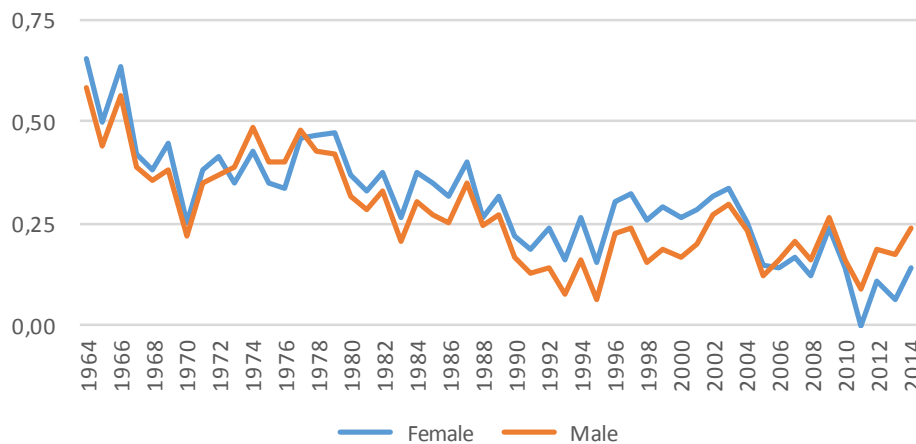
Life expectancy at birth in Japan



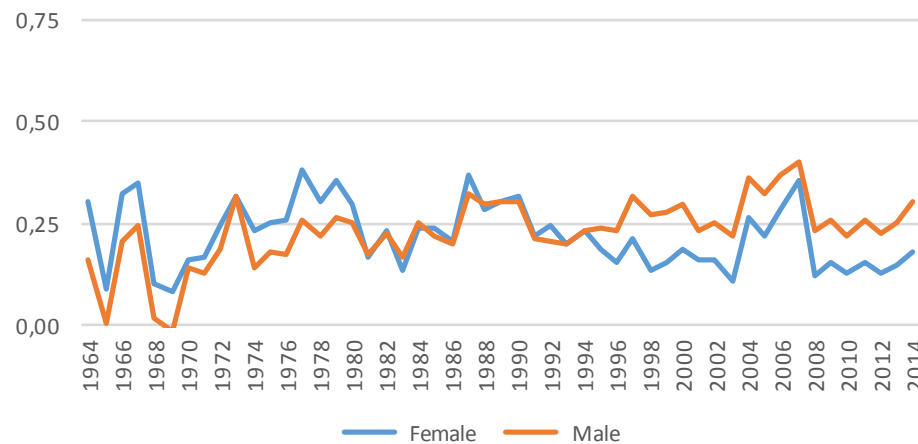
Life expectancy at birth in France



4-year running mean starting in 1960



4-year running mean starting in 1960



Augmenter l'espérance de vie, jusqu'où ?

- Une petite fille qui naitrait aujourd'hui... >>> + 100 ans
- Quel état de santé pour sa maman? >>> + 30 ans
- Quel état de santé pour sa grand mère maternelle? >>> + 30 ans
- Le temps pour la diffusion des innovations >>> + 30 ans
- $2016 + 30 + 30 + 30 + 100 = 2206$

Merci pour votre attention!

JOURNEE PRESERVAGE/MALADIE D'ALZHEIMER

Mardi 18 octobre 2016

Augmenter l'espérance de vie, jusqu'où ?

Jean-Marie Robine

INSERM - EPHE - Paris Research University, France



